

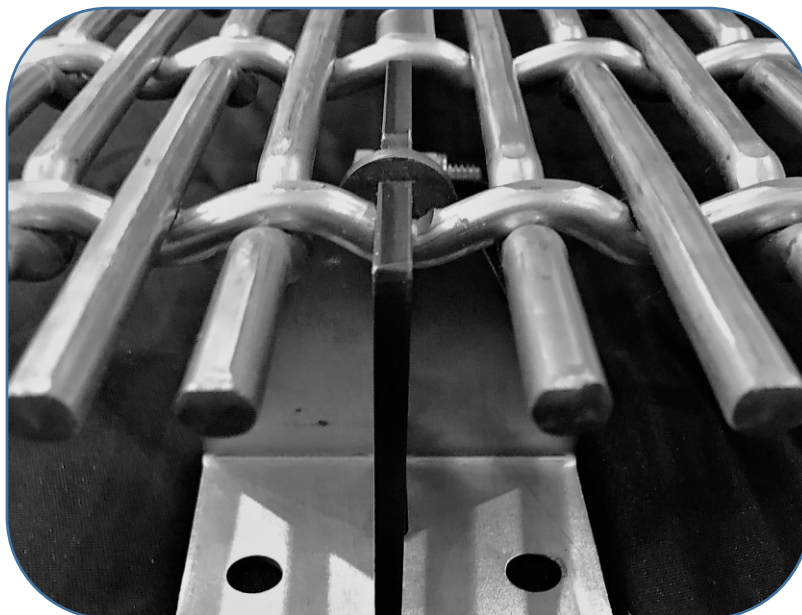


J&L WIRE

BOSS HOG EXTRA[®]

Self-Supported Flooring

U.S. Patent No. D864,494



Innovators in new products for the Agricultural Industry

Boss Hog Extra® - Self-Supported Flooring

Woven Tough

Description:

An innovative development for the hog flooring industry is J&L's newly designed and developed Boss Hog Extra® Self-Supported Flooring¹. The concept, to remove the necessity of purchasing additional frames and supports needed to secure the flooring, and to reduce the costs associated with the additional time needed to assemble and procure the ancillary parts. In their place, J&L incorporates supports into the flooring. These supports are inserted into place using the woven wires comprising the floor. To further assure that the supports remain secured and in place, a locking mechanism is incorporated restricting the supports from movement and becoming displaced.

Why Consider Our Self-Supported Flooring?

There are many reasons for choosing Boss Hog Extra® Self-Supported Flooring over the competitor's offerings. When considering the ease of installation alone, one can quickly grasp the potential savings in time and money, but there are many other advantages as well. Following are just a few items to consider before your next purchase.

Our proprietary galvanized coating process found on Boss Hog Extra® provides a coating that maintains better uniformity in thickness and overall consistency. This promotes a smoother wire surface for improved wear characteristics. The coating process found in our competitor's product typically displays a more non-consistent and rougher surface, which in time can affect the durability and service of the flooring.

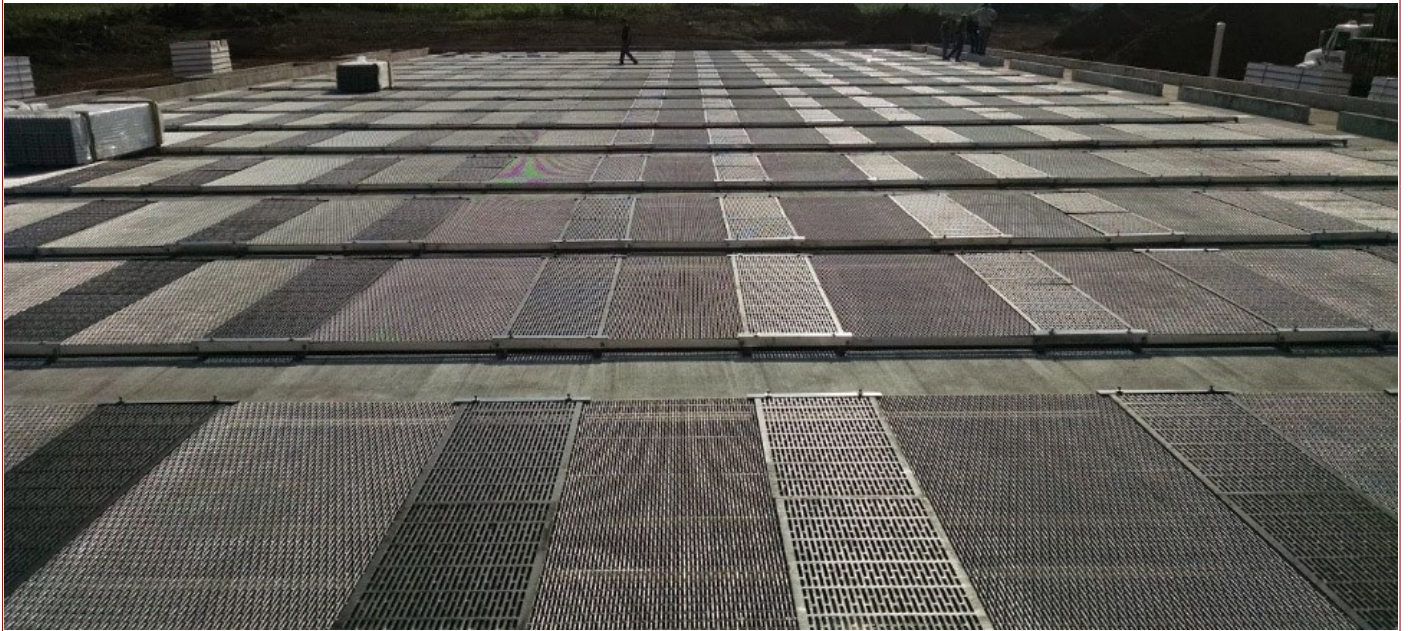
Boss Hog Extra® woven wire flooring does not contain welds that can deteriorate and break after time. Each wire is continuous from start to finish as it is drawn through our loom and woven into the finished product.

The supports are made from stainless steel to provide improved corrosion resistance and promote long-life. They also incorporate the necessary strength to assure that the surface stays level with no bows making it easier to obtain the proper fit when installing equipment.

Our floors are available in a variety of sizes, up to six (6) feet wide by twelve (12) feet long and come in either 5/16" or 3-gauge wire. Our larger sections offer a faster installation saving additional time and money. Smaller sections are also available in a variety of sizes (4x4, 4x6, 4x8, 4x10, 6x4, 6x6, 6x8, and 6x10). This versatility allows worn and deteriorated sections to be easily replaced without the need to cut, weld, and/or patch keeping the remaining floor in place.

Woven wire flooring is a practical solution for farrowing and nursery applications. The ease of flushing and cleaning makes the flooring less likely to trap bacteria. In addition, our double-smooth design provides increased comfort for the pigs.

¹US Patent No. D864,494



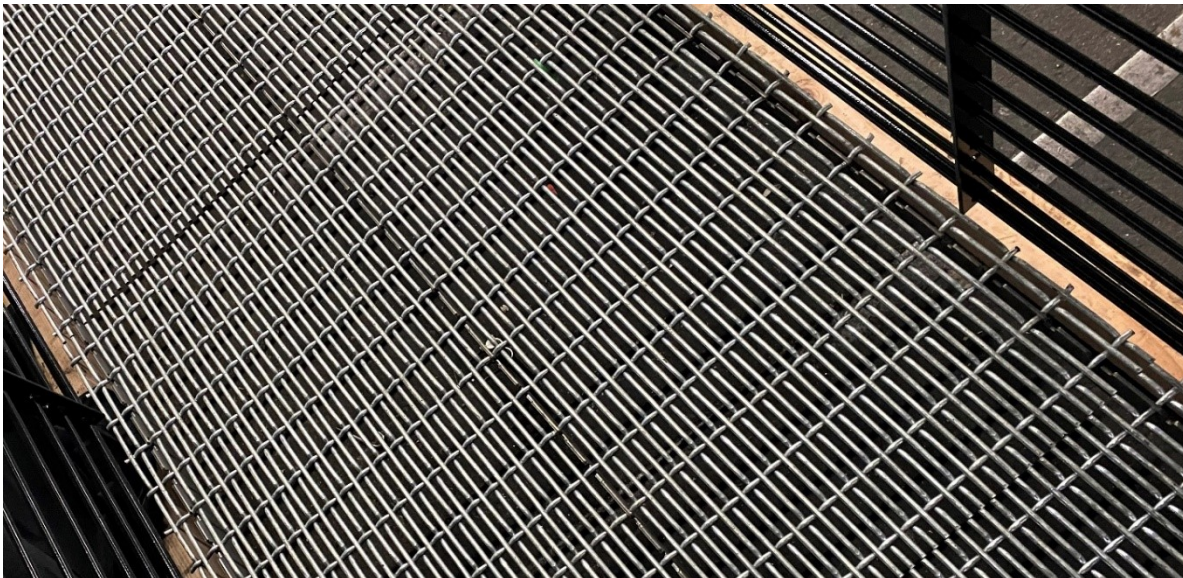
Our farrowing self-supported flooring system comes pre-assembled and customizable to the sizes that are best suited for your needs. They can be produced as a full 5'x7' or larger crate size removing the need for cast iron across the sow section. This increases the longevity of the flooring unit as our new Boss Hog Extra® woven wire flooring has been proven to outlast cast in extreme environments as a rigorous salt-spray exposure test has shown. *We can also produce in custom sizes to accommodate cast across the sow section.*





Our nursery self-supported unit makes installation a snap. Not only can the unit come pre-assembled but can be installed flush against a 3" ledge or raised above the concrete as needed. No additional frames are required.

Sizes can be made-to-order based on your specific needs with spans up to 12' long and up to 6' wide. Multiple sections of flooring can be installed across an 8', 10', or 12' span allowing for easy replacement. This saves additional cost and labor over the long run and completely removes the need for welding in new patches.



Minnesota

268 West Water Street
St. Paul, MN 55107

South Carolina

387 Mable T. Willis Blvd.
Walterboro, SC 29488

Contact Information

Phone: 866.777.8607
Fax: 651.224.6038
www.jlwire.com



03/16/2020